

# Introduction to Electrotechnology

## What will I gain from completing this VET short skill set?

Introduction to Electrotechnology provides grounding in safety and basic skills and knowledge relevant to a range of Electrotechnology roles. It aims to provide participants with skills to assist in gaining an Electrotechnology apprenticeship (Electrical, Refrigeration, Electronics and Telecommunications trades).

## Pre-requisites

“B” levels in Numeracy and Literacy at the end of Year 10.

## Delivery time-frame

Over 1 year.



## What will I learn?

This is a great preparatory course that will enable students to gain credit for two of the units completed for future study at Certificate II or Certificate III level.

## Please note:

This course will only run if maximum numbers are achieved.

Further information about this course will be made available towards the end of the year, as it is currently under construction at TasTAFE.



## Post-Secondary pathways:

- UEE22011 Certificate II in Electrotechnology (career start)
- UEE30811 Certificate III in Electrotechnology Electrician
- Multiple specialised choices at TAFE

## Future career pathways:

- Apprenticeships
- Multiple specialised career pathways



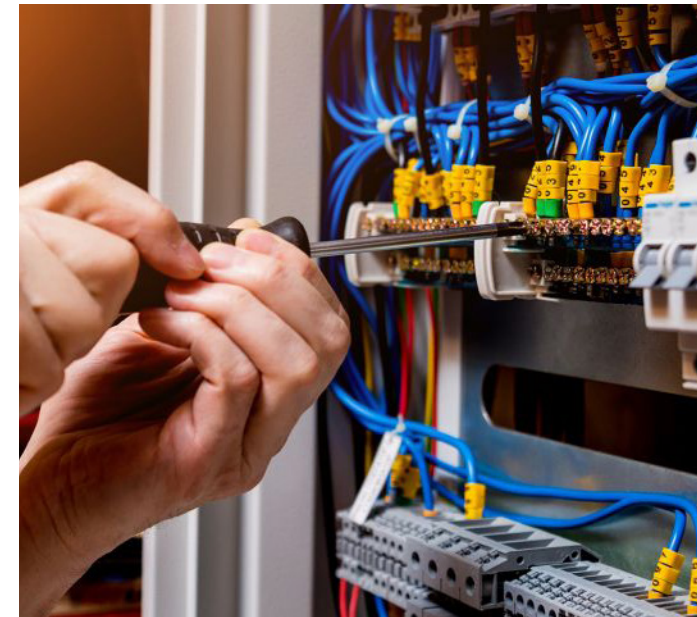
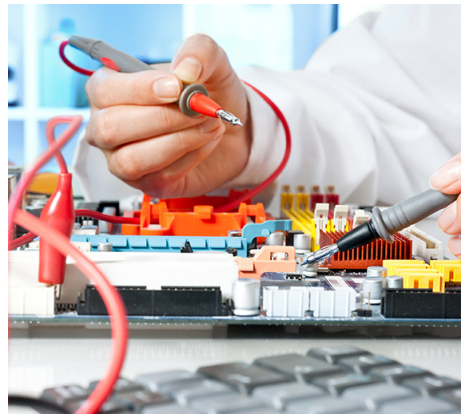
# Introduction to VET ELECTROTECHNOLOGY

(25 TCE credit points)

## Timetabled lessons:

**1 year** / 1 full day off-campus at TasTAFE Burnie Campus.

Leighland Christian School is working in a cluster school arrangement with 4 other schools to offer this course. There is a maximum number of students allowed. It is highly recommended that a student has strong literacy and numeracy skills (B's for English and Maths) at the end of Year 10. An interview is a mandatory process to gain entry into this course, with limited places available.



## Want more information?

Contact:  
Mrs Dianna de Deuge  
VET Coordinator  
Leighland Christian School

Email: [d.dedeuge@leighland.tas.edu.au](mailto:d.dedeuge@leighland.tas.edu.au)  
Phone: (03) 6425 0999



LEIGHLAND  
CHRISTIAN SCHOOL

